



USER APPLICATION MANUAL



STEP 01

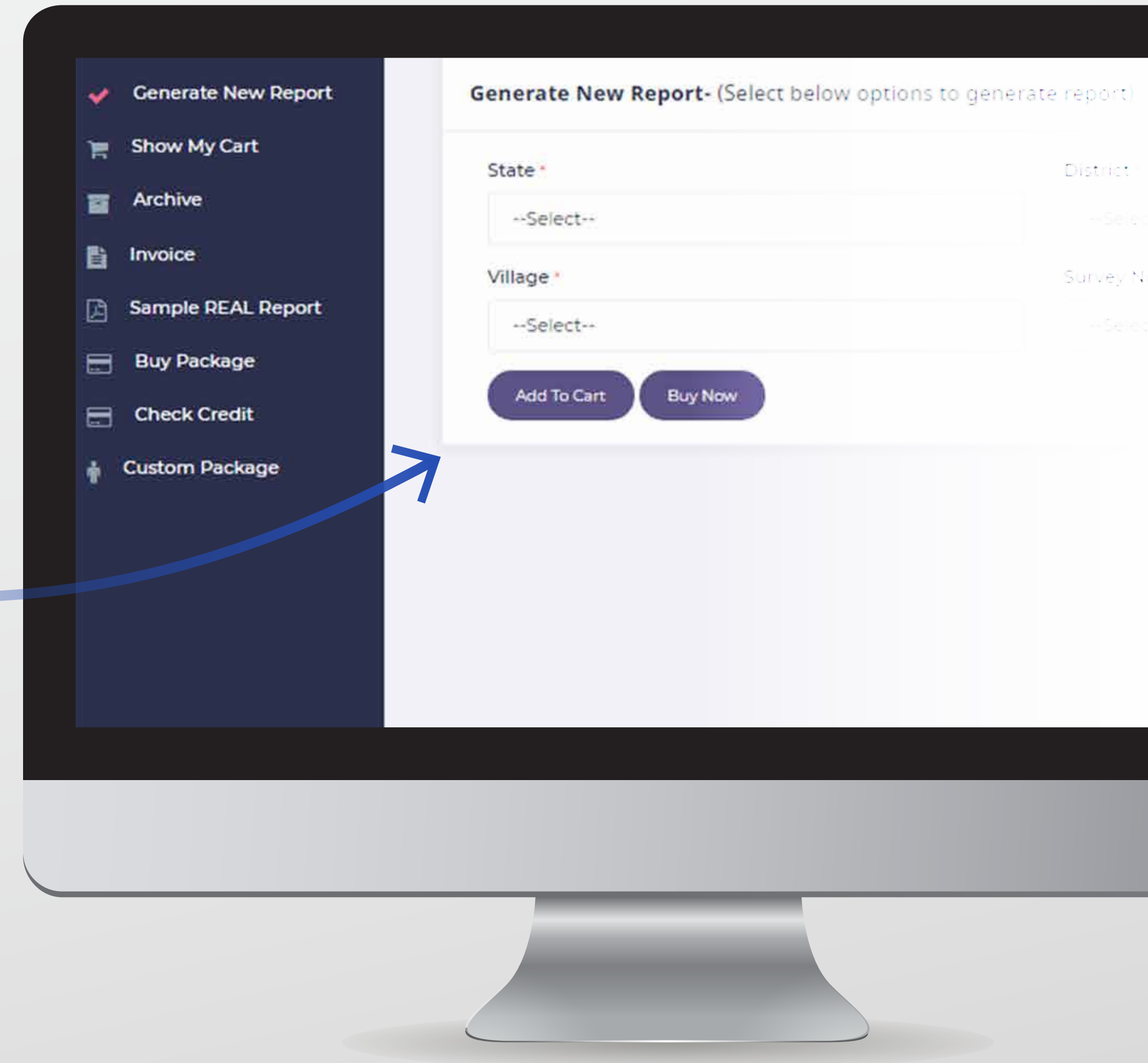
Go to the website www.realmaps.co.in and enter your registered mobile number and password to login.



STEP 02

Post login, to generate a new report you can select the State, District, Taluka, Village and Survey number from the drop down box.

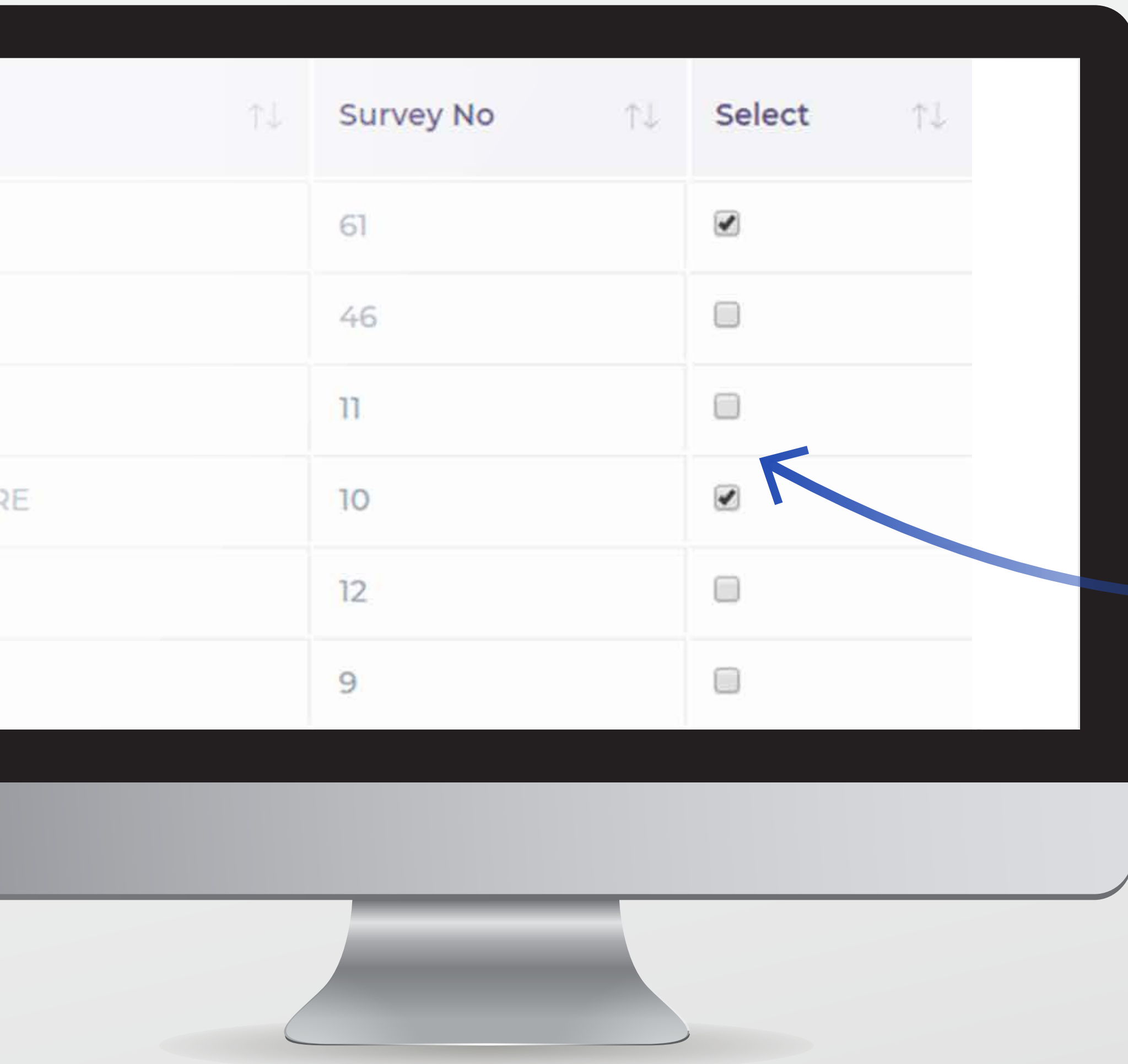
And click on add to cart button to proceed with your property identification report request.



STEP 02.2

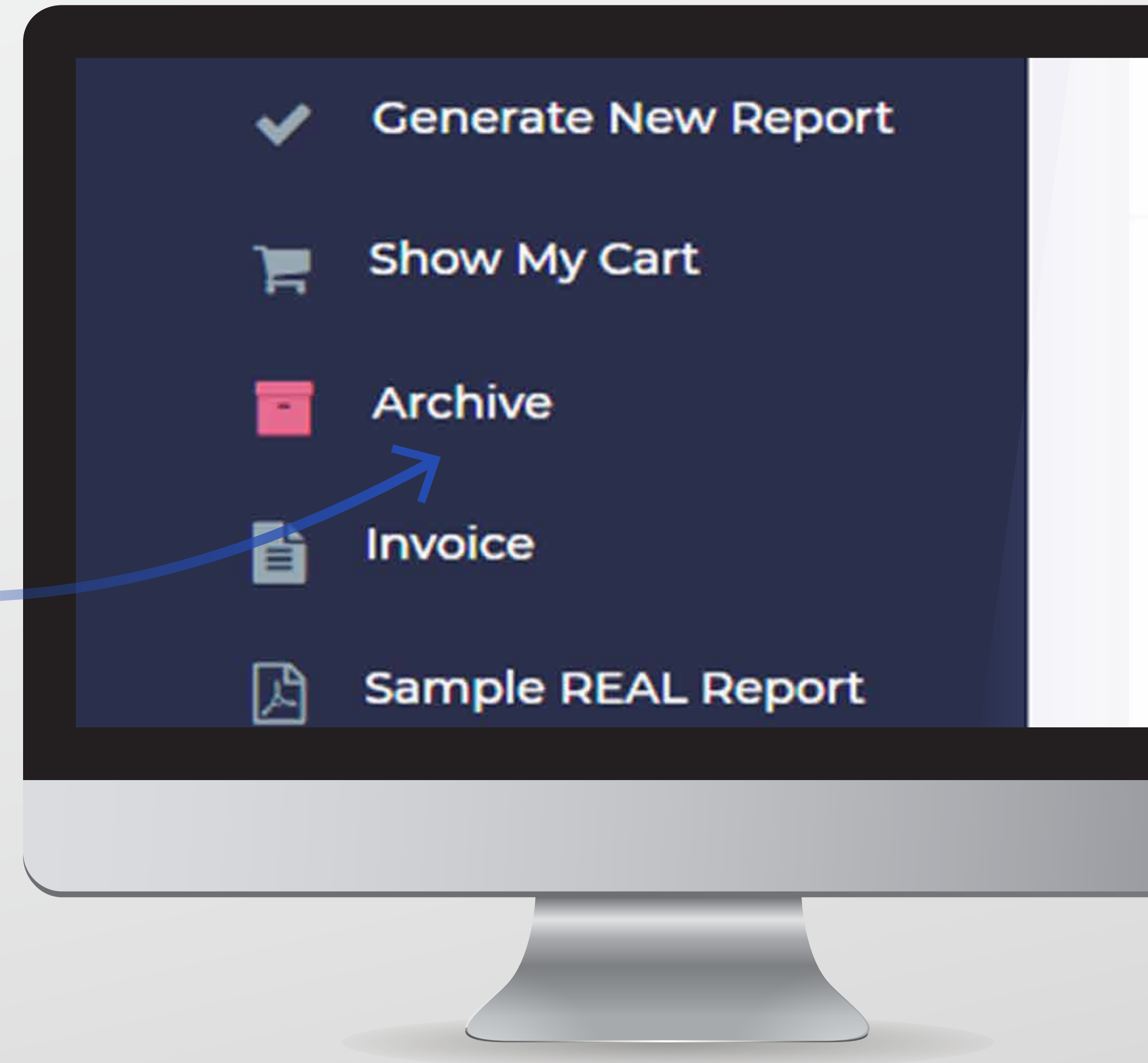
You can add multiple property identification reports to the cart and select the number of reports you want to proceed forward with the payments.

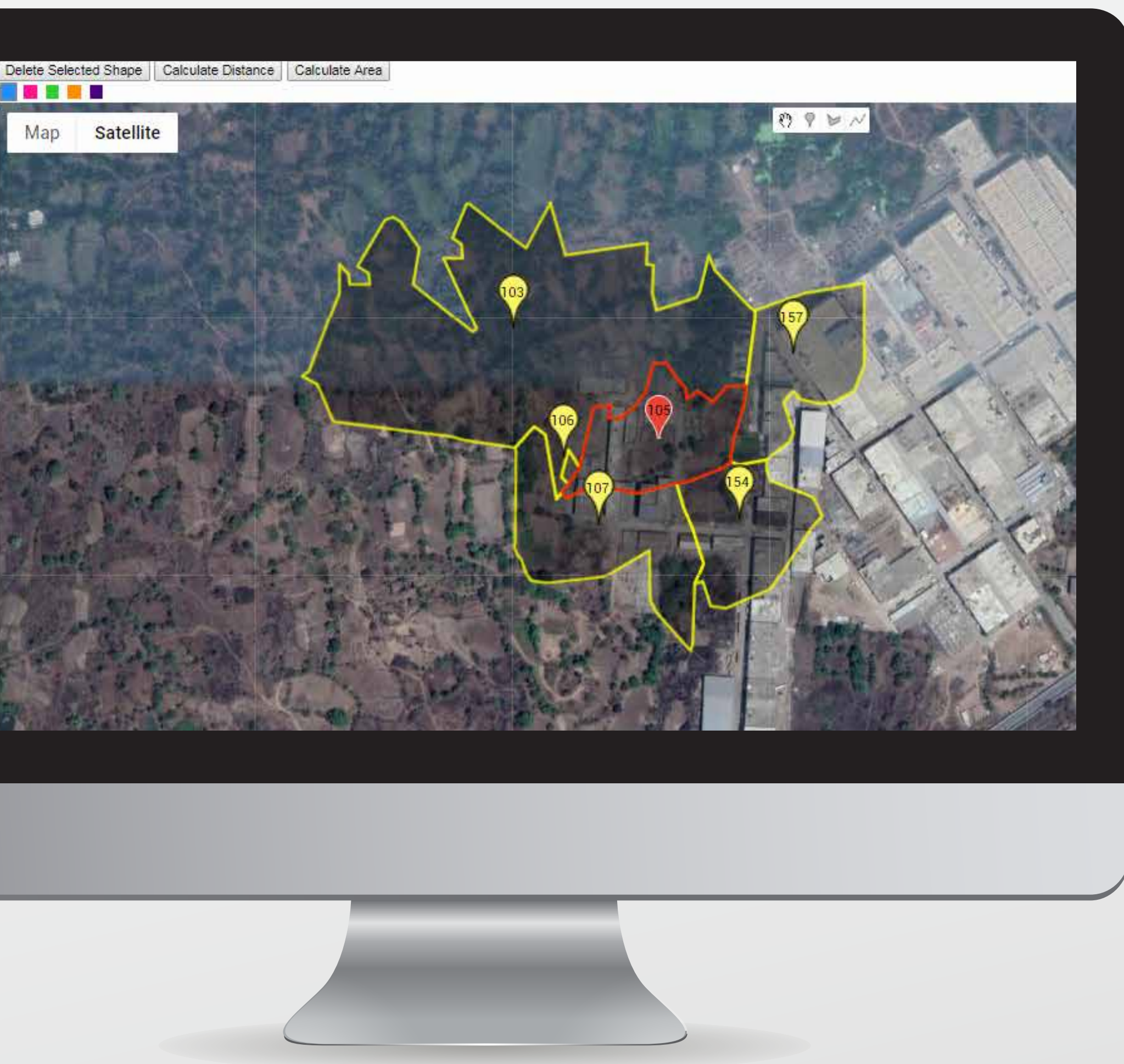
You can make the payment through PayU money or Paytm payment gateways.



STEP 03

After your payment is successful the reports will be available in the “archieved” section. You can download the reports, view the map on satellite image and share the location through KML.





FEATURES

Features of Map View will help you to identify your property, measure the distance or calculate the area and know the elevation of any point.



FEATURES

1. Draw a line

Draw temporary line shape over map area.

2. Polygon

Draw temporary polygon shape over map area.

3. Calculate Area

Use Draw polygon tool to draw polygon on desire location and click on "Calculate Area Button" to get its area.

4. Calculate Distance

Use Draw polygon tool to draw Line over desire location and click on "Calculate Distance Button" to get distance between first and last point of line.

5. Elevation

Click on desire location over map to get elevation of that point.

6. Delete selected shape

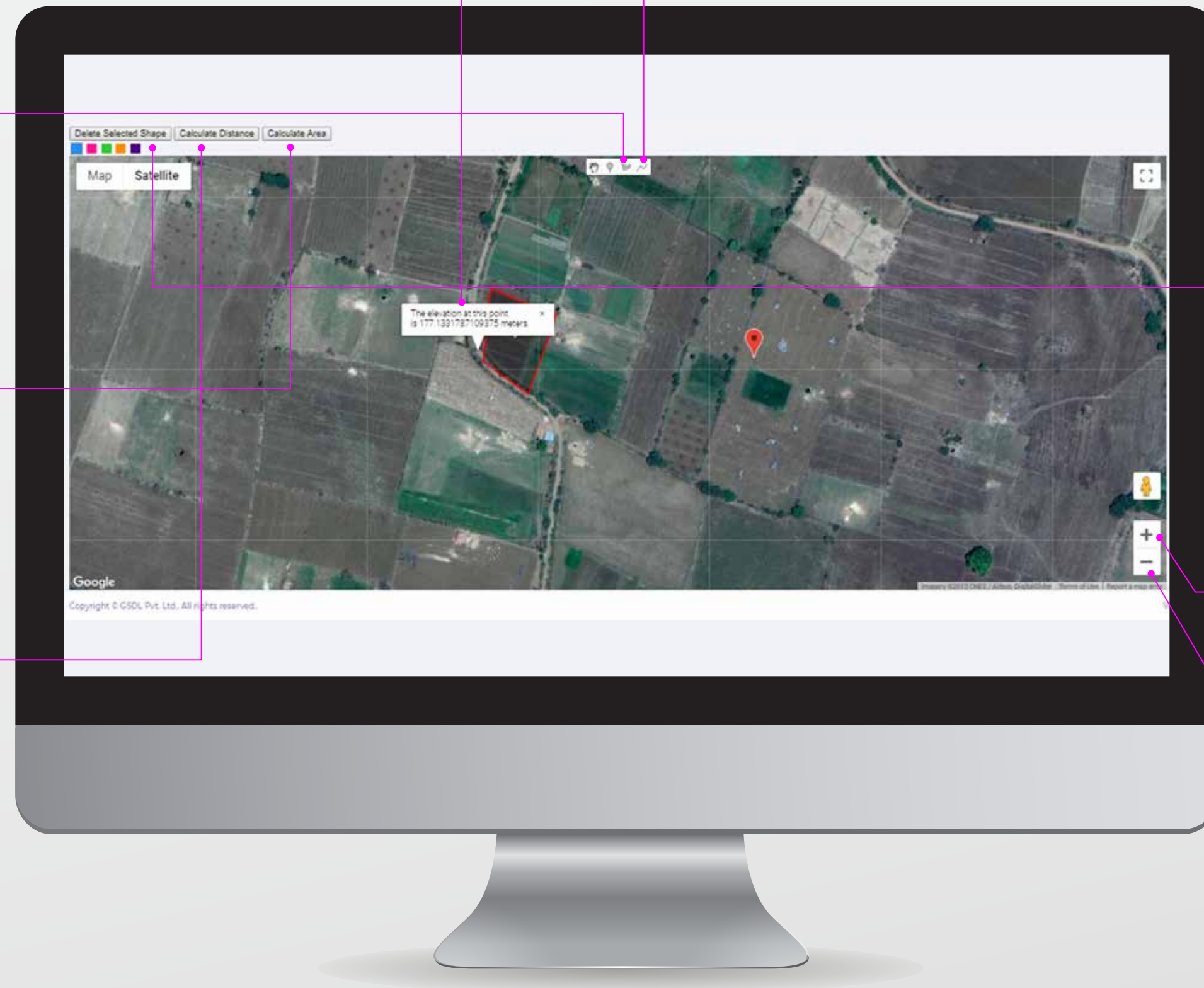
Firstly selecting the shape by clicking on border of shape you want to delete and then click on "Delete selected shape" Button.

7. +

Click to Zoom in map view.

8. -

Click to Zoom out map view.





For general queries:

Contact us

022-61572608

Email

info@realmaps.co.in

Website

www.realmaps.co.in

Office

REAL Maps(C) 2019 –
101-A, Annexure A, Aarus
Chambers, Worli- 400018